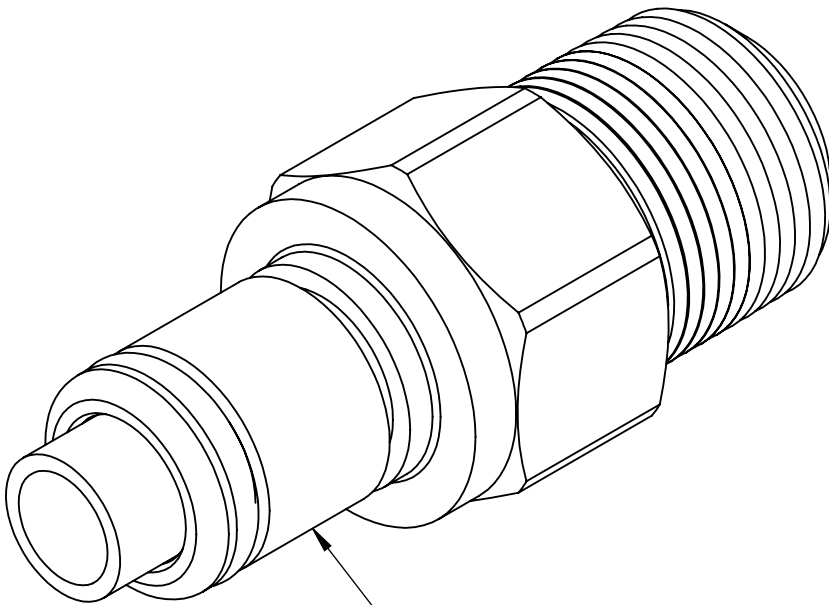
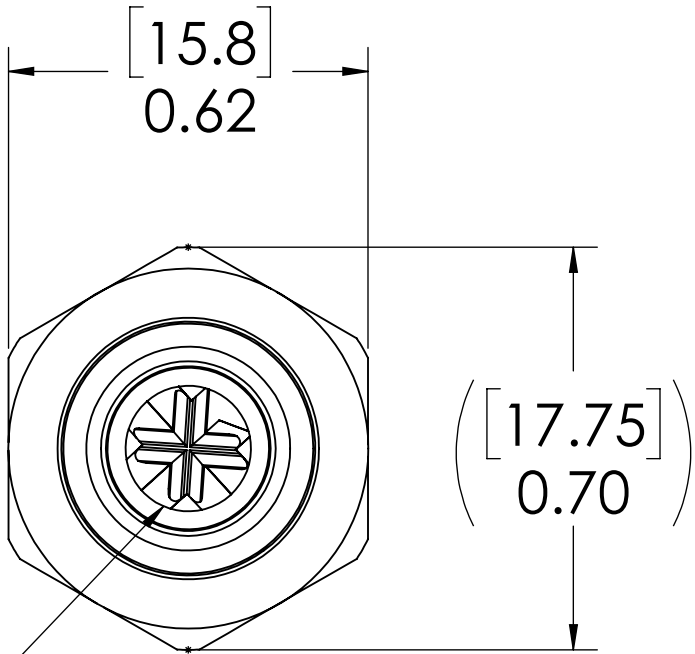


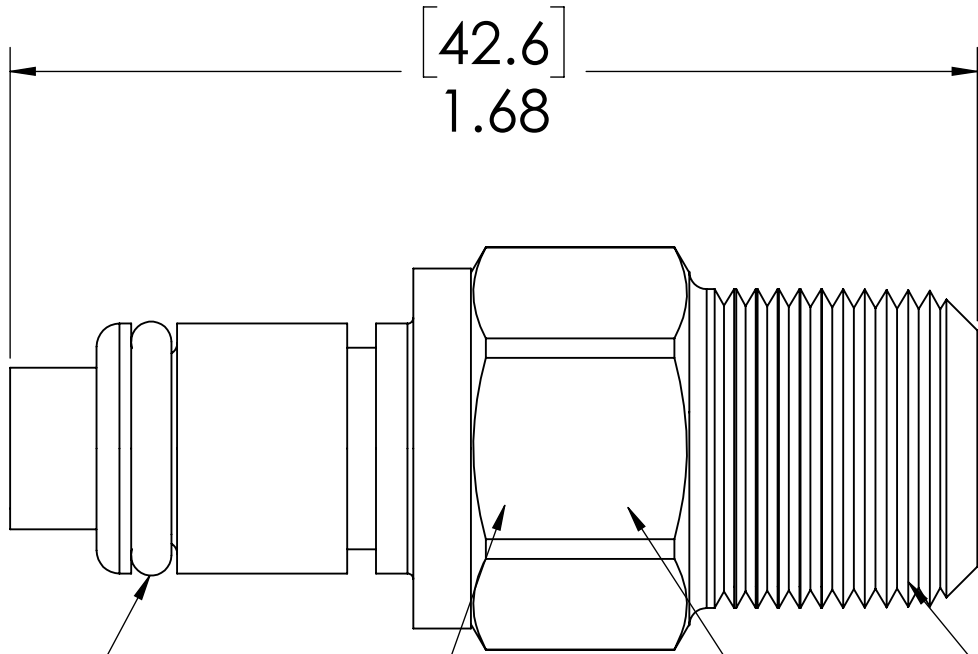
REVISIONS						
SHEET	ZONE	REV.	ECO	DESCRIPTION	DATE	APPROVED
1	ALL	A	50253	2017 FORMAT UPDATE	3/8/2018	HRC



PLUG,
(BRASS, NICKEL AND
CHROME PLATED)



VALVE,
(ACETAL)



O-RING,
(BUNA-N)

VALVE O-RING,
INTERNAL
(BUNA-N)


1/4" NPT
(PIPE THREAD)

VALVE SPRING,
INTERNAL
(STAINLESS STEEL)

NOTES:

1. MATERIAL: BRASS
2. FINISH: CHROME
3. O-RING MATERIAL: BUNA-N
4. O-RINGS LUBRICATED WITH FOOD GRADE SILICONE OIL, 350 CST.

FOR REFERENCE ONLY

UNLESS OTHERWISE SPECIFIED:		NAME	DATE			
DIMENSIONS ARE IN INCHES TOLERANCES: FRACTIONAL: 1/32 ANGULAR: MACH ±0.5 BEND ±2 ONE PLACE DECIMAL ±0.1 TWO PLACE DECIMAL ±0.01 THREE PLACE DECIMAL ±0.005 TWO PLACE DECIMAL (mm) ±0.12	DRAWN	RDA	7/10/2017	PART NO: 40CBV-PB1-04		
	CHECKED	HRC	7/10/2017			
	ENG APPR.	HRC	03-08-18	DESCRIPTION: LinkTech 40CB Series male Thread Male, Valved, 250 MNPT, Chrome Brass		
	MFG APPR.	BDB	03-08-18			
PROPRIETARY AND CONFIDENTIAL	PURCHASING	RK	03-08-18	SIZE	DWG. NO.	REV
THE INFORMATION CONTAINED IN THIS DRAWING IS THE SOLE PROPERTY OF LINKTECH LLC. ANY REPRODUCTION OR DISCLOSURE IN PART OR AS A WHOLE WITHOUT THE WRITTEN PERMISSION OF LINKTECH LLC IS STRICTLY PROHIBITED.	COMMENTS:			C	40CB400222	A
				SCALE: NTS	WEIGHT:	SHEET 1 OF 1